



## **CHILD, YOUNG PEOPLE AND VULNERABLE ADULT SAFEGUARDING POLICY**

**Child, young people and vulnerable adult safeguarding policy dated:  
January 2020**

**Name:** St James by the Park, also known as Shirley Parish Church  
(Hereafter, "The Church")

**Church Address:** 133 Church Street  
Southampton  
SO15 5LW

**Phone:** 023 8077 1755

**Web:** [www.stjamesbythepark.org](http://www.stjamesbythepark.org)

**Reviewed:** Jan 2022

**Amended:** Jan 2022

This policy supersedes all previous safeguarding policies & will be reviewed annually.

## Table of Contents

1. INTRODUCTION	4
2. WHY WE HAVE A CHILD, YOUNG PERSON AND VULNERABLE ADULT SAFEGUARDING POLICY	5
3. MISSION STATEMENT	5
4. DEFINITIONS OF ABUSE FOR CHILDREN AND YOUNG PEOPLE	6
5. DEFINITIONS OF ABUSE FOR ADULTS	8
6. SAFER RECRUITMENT	11
7. RESPONDING TO CONCERNS AND ALLEGATIONS	14
8. CARING PASTORALLY FOR VICTIMS/SURVIVORS OF ABUSE AND AFFECTED OTHERS	18
9. CARING PASTORALLY FOR CHURCH OFFICERS WHO ARE THE SUBJECT OF CONCERNS OR ALLEGATIONS OF ABUSE AND AFFECTED OTHERS	18
10. RESPONDING TO THOSE WHO MAY PRESENT A KNOWN RISK TO CHILDREN, YOUNG PEOPLE OR VULNERABLE ADULTS WITHIN A CHRISTIAN CONGREGATION	18
11. A SAFE ENVIRONMENT AND ACTIVITIES	19
12. USE OF SOCIAL MEDIA	24
CONTACT DETAILS:	26
FURTHER INFORMATION	26
APPENDIX A: POSSIBLE INDICATORS OF ABUSE	28
APPENDIX B FACT SHEET – SEXTING (YOUTH PRODUCED SEXUAL IMAGERY)	30
APPENDIX C: MODEL VOLUNTEER JOB ROLE	32

APPENDIX D MODEL ROLE APPLICATION FORM	34
APPENDIX E: REFERENCE REQUEST LETTER	35
APPENDIX F: MODEL CONFIDENTIAL DECLARATION FORM	38
APPENDIX G: MODEL INTERVIEW/DISCUSSION	43
APPENDIX H: MODEL APPOINTMENT LETTER	44
APPENDIX I: SAFEGUARDING TRAINING	45
APPENDIX J: FLOWCHART RESPONSE TO ALLEGATION	47
APPENDIX K: PARISH RECORDING TEMPLATE	49
APPENDIX L: STATEMENT ON DOMESTIC ABUSE AND VIOLENCE	51

# 1. INTRODUCTION

## Definitions of Terms

For the purposes of this Safeguarding Policy, all references to:

*'child', 'children', 'young person', 'young people', 'youth'* – whether singular or plural – are used interchangeably and are taken to refer to those under 18 years of age.

*'child abuse'* refers to any of the recognised forms of abuse – physical, emotional, sexual abuse or neglect.

*'Church officer'* refers to anyone representing the church in any role

*'vulnerable adult'* refers to a person aged 18 or over whose ability to protect himself or herself from violence, abuse, neglect or exploitation is significantly impaired through physical or mental disability, illness, old age, emotional fragility, distress, or otherwise; and for that purpose, the reference to being impaired is to being temporarily or indefinitely impaired.

*'workers', 'staff', 'volunteers', 'leaders', 'helpers'* are used interchangeably and are taken to refer to anyone interacting with children on behalf of The Church.

## Definitions of abbreviations

CDF	Confidential Declaration Form
DBS	Disclosure & Barring Service
DSA	Diocesan Safeguarding Advisor/Officer or Manager
DSI	Diocesan Safeguarding & Inclusion =DSA
LADO	Local Authority Designated Officer
PSO	Parish Safeguarding Officer
PSA	Parish Safeguarding Administrator

Some factors that increase vulnerability include:

- |   |   |
|---|---|
| <ul style="list-style-type: none"><li>● A mental illness, chronic or acute.</li><li>● A sensory or physical disability or impairment.</li><li>● A learning disability.</li><li>● A physical illness.</li><li>● Dementia.</li><li>● An addiction to alcohol or drugs.</li><li>● Failing faculties of old age.</li><li>● Those who are homeless.</li><li>● Refugee families or individual (including those seeking asylum).</li></ul> | <ul style="list-style-type: none"><li>● Victims/survivors of domestic abuse – direct violence and/or significant emotional coercion.</li><li>● Those who have suffered historic abuse in childhood.</li><li>● A permanent or temporary reduction in physical, mental or emotional capacity brought about by life events – for example bereavement or abuse or trauma.</li></ul> |
|---|---|

These factors may not exist in isolation; for example, someone with a drink problem masking underlying dementia; or a frail housebound elderly person with underlying depression.

## **2. WHY WE HAVE A CHILD, YOUNG PERSON AND VULNERABLE ADULT SAFEGUARDING POLICY**

The Parochial Church Council (Hereafter known as PCC) recognises the need to provide a safe and caring environment for Children, Young People and Vulnerable Adults

The PCC is committed to on-going training for all those who work with Children, Young People and Vulnerable Adults and will regularly review the Safeguarding Policy and procedures.

A Child, Young Person and Vulnerable Adult Safeguarding Policy helps to create a safe and positive environment. Although no procedures or processes can offer complete protection following these procedures and implementing a policy minimises the risk to children, young people and vulnerable adults from abuse and exploitation.

A Child, Young Person and Vulnerable Adult Safeguarding Policy clarifies what The Church requires in relation to the protection of children, young people and vulnerable adults. It sets out standards of behaviour for staff and volunteers and what to do if they notice, or are told about, inappropriate behaviour by others.

A Child, Young Person and Vulnerable Adult Safeguarding Policy is a statement of intent that demonstrates The Church's commitment to safeguard all from harm. It will help move The Church towards best practice in this area and deter those who would wish to harm children or vulnerable adults.

## **3. MISSION STATEMENT**

The PCC recognises the importance of its ministry with children, young people and vulnerable adults and its responsibility to protect and safeguard their welfare. The welfare of the individual is always paramount.

As part of its mission, The Church is committed to:

- Promoting a safer environment and culture.
- Safely recruiting and supporting all those with any responsibility related to children, young people and vulnerable adults within The Church.
- Responding promptly to every safeguarding concern or allegation.
- Caring pastorally for victims/survivors of abuse and other affected persons.
- Caring pastorally for those who are the subject of concerns or allegations of abuse and other affected persons.
- Responding to those that may pose a present risk to others.

## **4. DEFINITIONS OF ABUSE FOR CHILDREN AND YOUNG PEOPLE**

The abuse of children and young people can take many forms. They have the same right to protection regardless of age, disability, gender reassignment, race, religion or belief, sex, or sexual orientation. Those from minority ethnic groups and with disabilities (physical, sensory and/or learning difficulties) are especially vulnerable and need extra care and protection.

Children and Young People can be the victims of physical, sexual, emotional and spiritual abuse and neglect.

Potentially anyone, adult or child may abuse a child by inflicting harm. An adult may abuse a child by neglect or by failing to protect a child from harm. Children may be abused in a family or in an institutional or community setting by those known to them or, more rarely, by a stranger.

### **Statutory Definitions**

The UK central government document “Working Together to Safeguard Children” categorises and defines child abuse in terms of:

#### **PHYSICAL ABUSE**

Physical abuse including hitting, shaking, throwing, poisoning, burning or scalding, drowning, suffocating or otherwise causing physical harm to a child. Physical harm may also be caused when a parent or carer fabricates the symptoms of, or deliberately induces illness in a child.

#### **EMOTIONAL ABUSE**

Emotional abuse including conveying to a child that they are inadequate, humiliation, blaming, controlling, intimidation, verbal abuse, isolation, seeing or hearing the ill-treatment of another. It may involve serious bullying (including cyberbullying).

#### **SEXUAL ABUSE**

Sexual abuse including assault by penetration (for example, rape or oral sex) or non-penetrative acts such as masturbation, kissing, rubbing and touching outside of clothing. It may include involving children in looking at, or in the production of, sexual images, watching sexual activities or grooming a child in preparation of abuse.

#### **NEGLECT**

Neglect including failure to provide adequate food, clothing and shelter, to protect a child from physical and emotional harm or danger, to provide adequate supervision and/or access to appropriate medical care or treatment. It may occur during pregnancy as a result of maternal substance abuse.

[See Appendix A ‘Possible indicators of Abuse’.](#)

#### **OTHER TYPES OF ABUSE**

## **DOMESTIC ABUSE**

Witnessing domestic abuse is child abuse, and teenagers can suffer domestic abuse in their relationships.

## **SEXUAL EXPLOITATION**

Child Sexual Exploitation (CSE) is a type of sexual abuse. Children or Young People may be tricked into believing they are in a loving, consensual relationship. They might be invited to parties and given drugs and alcohol. They may also be groomed and exploited online. Some children and young people are trafficked into or within the UK for the purpose of sexual exploitation.

## **BULLYING AND CYBERBULLYING**

Bullying is behaviour that hurts someone else – such as name calling, hitting, pushing, spreading rumours, threatening or undermining someone. It can happen anywhere – at school, at home or online. It is usually repeated over a long period of time and can hurt a child both physically and emotionally. Bullying that happens online, usually social networks, games and mobile phones, is often called cyberbullying. A child can feel like there is no escape because it can happen wherever they are, any time day or night.

## **ONLINE ABUSE**

With the ever-growing use of the internet, mobile telephones and online gaming, there has been a corresponding rise in the use of internet and electronic communications to target, groom and abuse children. Adults may target chatrooms, social networking sites, messaging services, mobile phones, online gaming sites and the internet generally. Children are particularly vulnerable to adults who pretend to be children of similar ages when online and who try to obtain images or engineer meetings.

## **ELECTRONIC IMAGES**

The downloading, keeping and/or distributing of indecent images of children (all classified as sexual images) are all criminal offences. Such offences are sometimes referred to as non-contact sexual offences. However, it must be remembered that children will have been abused in the making of the images. The texting of sexual messaging and photographs (sometimes referred to as Sexting) can be particularly problematic and abusive among children and young people.

[See Appendix B 'Fact Sheet- Sexting \(youth produced Sexual Imagery\)'](#).

## **5. DEFINITIONS OF ABUSE FOR ADULTS**

All adults, including vulnerable adults, have a fundamental human right to choose how and with whom they live, even if this appears to involve a degree of risk. They should be supported to make those choices, to live as independently as possible and treated with respect and dignity.

### **Who abuses adults?**

Potentially anyone, adult or child, can be the abuser of an adult. Abuse will sometimes be deliberate, but it may also be an unintended consequence of ignorance or lack of awareness. Alternatively, it may arise from frustration or lack of support. The list can include:

- Relatives of the vulnerable person including husband, wife, partner, son or daughter. It will sometimes include a relative who is a main carer.
- Neighbours.
- Paid or voluntary carers.
- Workers in places of worship.
- People who are themselves vulnerable and/or are users of a care service.
- Confidence tricksters who prey on people in their own homes or elsewhere.

### **Relatives who are Main Carers**

Carers can experience considerable stress, exhaustion and frustration without respite or support. This can lead to unintended poor care or abuse. Relatives who are the main carers may also be subject to abuse by those for whom they are caring. This abuse is often endured for long periods and unreported.

### **Institutions**

All people living in institutions are more likely to have a degree of vulnerability. The Care Quality Commission in England has responsibility for inspecting and regulating the quality of care in institutions such as residential care homes, domiciliary care services and hospitals. In addition, the Local Government Ombudsman deals with complaints that relate to adult social care. The HM Inspectorate of Prisons in England inspects prisons. Some members of the parish may be visiting adults in institutions -hospitals, prisons and residential homes. If, as part of these responsibilities, they have concerns about the care being given and/or the way that someone is being treated, the DSA should be contacted. You can also refer directly to the institution or raise concerns with the appropriate inspection and/or complaints body.

### **Definitions of Adult Abuse**

The UK central government document “Care and Support Statutory guidance” categorises and defines adult abuse in terms of:

## **PHYSICAL ABUSE**



Physical abuse including hitting, slapping, pushing, kicking, misuse of medication, restraint or inappropriate sanctions.

### **SEXUAL ABUSE**

Sexual abuse including rape and sexual assault or sexual acts to which the vulnerable adult has not consented or could not consent or was pressurised into consenting.

### **PSYCHOLOGICAL ABUSE**

Psychological abuse including emotional abuse, threats of harm or abandonment, deprivation of contact, humiliation, blaming, controlling, intimidation, coercion, harassment, verbal abuse, isolation or withdrawal from services or supportive networks.

### **FINANCIAL OR MATERIAL ABUSE**

Financial or material abuse including theft, fraud, exploitation, pressure in connection with wills, property or inheritance or financial transactions, or the misuse or misappropriation of property, possessions or benefits.

### **NEGLECT OR ACTS OF OMISSION**

Neglect or acts of omission including ignoring medical or physical care needs, failure to provide access to appropriate health, social care or educational services, the withholding of the necessities of life, such as medication, adequate nutrition and heating.

### **DISCRIMINATORY ABUSE**

Discriminatory abuse including racist, sexist, that is based on a person's disability, and other forms of harassment, slurs or similar treatment.

### **DOMESTIC ABUSE**

Domestic abuse that is usually a systematic, repeated and often escalating pattern of behaviour by which the abuser seeks to control, limit and humiliate, often behind closed doors.

### **ORGANISATIONAL ABUSE**

Organisational abuse including neglect and poor care practice within an institution or specific care setting such as a hospital or care home. This may range from one off incidents to on-going ill-treatment. It can be through neglect or poor professional practice as a result of the structure, policies, processes and practices within an organisation.

### **MODERN SLAVERY**

Modern Slavery including human trafficking; forced labour and domestic servitude; traffickers and slave masters using whatever means they have at their disposal to coerce, deceive and force individuals into a life of abuse, servitude and inhumane treatment.

## 6. SAFER RECRUITMENT

The House of Bishops' Safeguarding Policy states, '*The Church will select and vet all those with any responsibility related to children, young people and vulnerable adults within the Church*'.

<p>The PCC is responsible for the appointment of those working with children, young people and vulnerable adults, paid or unpaid. At least two individuals will be responsible for recruitment. All those involved in recruitment will be capable and competent, trained in safer recruitment and able to keep personal matters confidential.</p>	
<p><b>1. Job/ role description</b>  <b>Paid</b> - Construct a clear and accurate job description and person specification.  <b>Unpaid</b> - A role description will be written. These will include what level of DBS check is required.</p>	<p><a href="#">Appendix C: Model volunteer job role</a></p>
<p><b>2. Advertise</b>  <b>Paid</b> - Role will be advertised widely.  <b>Unpaid</b> - Role will be advertised in Parish communications.</p>	
<p><b>3. Application form</b>  <b>All roles</b> - An application form will be completed. Two references will be taken up.</p>	<p><a href="#">Appendix D: Model Application form</a>  <a href="#">Appendix E: Model Reference request letter</a></p>
<p><b>4. Confidential Declaration Form</b>  <b>All roles</b> - Complete a Confidential Declaration Form.</p>	<p><a href="#">Appendix F: Model Confidential Declaration Form</a></p>
<p><b>5. Shortlist</b>  <b>Paid</b> - Shortlist, carefully examining the application forms. Identify any gaps in employment/personal history and ensure those shortlisted have met the requirements of the person specification.  <b>Unpaid</b> - Review any interest from volunteers and assess suitability against requirements</p>	
<p><b>6. Interview</b>  <b>Paid</b> – Have a face-to-face interview with pre-planned and clear questions to assess applicants' suitability for the role. Seek explanations for gaps in employment/personal history. It may also be appropriate to ask the individual to complete a test or presentation if applicable. Check identification and the Confidential Declaration Form (CDF).  <b>Unpaid</b> – Have an informal discussion based on model interview questions.</p>	<p><a href="#">Appendix G: Model Interview /discussion</a></p>

<p><b>7. Offer the role</b>  <b>Paid</b> - The decision will be made by the interviewing panel, subject to completion of all checks to the satisfaction of the PCC. No role can commence until satisfactory checks have been completed.  <b>Unpaid</b> - Role can commence once all checks have been completed.</p>	
<p><b>8. Checks</b>  <b>Paid</b> - Once the applicant has been offered the role, subject to satisfactory checks, ask the applicant to complete an enhanced Disclosure and Barring Service check (DBS). Any blemished DBS checks or information of concern on the CDF must be risk assessed by the DSA. In cases where someone has either never lived in the UK or spent a period of time overseas (i.e. lived abroad), the person making the appointment should request an additional check and ask the applicant to obtain criminality information from the country where he/she was resident. It is also recommended to undertake an occupational health check for paid roles where possible.  <b>Unpaid</b> - Where relevant a DBS check will be undertaken.</p>	
<p><b>9. Appoint</b>  <b>Paid</b> - Once all checks are satisfactory and support the interview decision, the person can be formally appointed.  <b>Unpaid</b> - Ideally a potential end date will be discussed. This can always be extended but helps set expectations for both parties.</p>	<p><a href="#">Appendix H: Model appointment letter</a></p>
<p><b>10. Probation (Paid), Trial (Unpaid) period</b>  <b>Paid</b> - Probation period as set in role description and reviewed regularly.  <b>Unpaid</b> - trial period as per role description</p>	
<p><b>11. Induct, Train and Support</b></p>	<p><a href="#">Appendix I: Safeguarding Training</a></p>

<p><b>Paid</b> - Induct new workers, including expectations in relation to behaviour. Ensure supervision/support is in place and arrange for attendance on the Church of England safeguarding training.</p> <p><b>Unpaid</b> - continuing training and support given</p>	
--	--

## 7. RESPONDING TO CONCERNS AND ALLEGATIONS

### 7.1 [Appendix J Flowchart for responding promptly to every safeguarding concern or allegation.](#)

#### 7.2 What to do if you are concerned that a child or adult may be at risk from abuse or if you are concerned that a church officer may be abusing a child or adult.

- i. Respond well to the victim/survivor if it is a direct disclosure, to ensure they feel listened to and taken seriously. Explain what will happen next and check out support requirements. They should be informed that their identity and the identity of the respondent will be shared with key church officers and may be shared with the statutory agencies if there is any current risk to children or adults. If possible seek written consent to share the information with the relevant people using Consent to Share form. For children under the age of 18 parental consent should be sought if possible unless the parent/parents are involved in the abuse or it would put the child at greater risk.

The concern or allegation should not be shared with anyone other than those who need to know (e.g. the statutory agencies and appropriate church officers).

- ii. **EMERGENCY:** If you believe a child or adult is in immediate danger of significant or serious harm, contact the emergency services on 999.
- iii. **NON-EMERGENCY:** Contact Parish Safeguarding Officer/PSO on 07593 535570 or Incumbent/Vicar 023 80 779665 in the first instance. They must then contact the DSA. If neither are available, contact the DSA directly yourself. DSA 01962 737317 or 07921 865374. If the concern arises in an activity, discuss with the group/activity leader, who will contact the Parish Safeguarding Officer or incumbent.
- iv. Any safeguarding concerns must be reported to the DSA within 24 hours.
- v. If the PSO/incumbent or the DSA are not available within 24 hours, contact

Children's Social Care, 023 80 915535 or 07789 616092 or Adult Social Care, 023 80 833003.and/or the police on 101 directly, if the concern is that a child or adult is being abused.

Contact the Local Authority Designated Officer (LADO) and/or police if the concern is that a church officer may be abusing a child or adult.

Advise the Parish Safeguarding Officer, incumbent or DSA as soon as possible that you have made a referral.

**If in doubt don't delay, seek advice from statutory agencies.**

- vi. Do not contact the respondent or anyone who may be implicated in the allegation or disclosure, even if they would normally be contacted as part of the procedure, until advice has been sought from the DSA or statutory agencies.
- vii. Record the details of the concern or allegation. Where it is not appropriate to take notes at the time (usually it will not be), make a written record as soon as possible afterwards or before the end of the day. Record the time, date, location, persons present and how the concern or allegation was received, e.g. by telephone, face to face conversation, letter, etc. The record should include details of information provided to that person as well as the information received. Always sign and date the record. Keep it factual. Pass on a copy to the DSA (and/or the PSO /incumbent). The records should be kept secure and confidential – [Appendix K: Parish Recording template](#)

**If the concern is about a child or adult:**

- viii. The DSA will act in line with the House of Bishops' guidance. They will offer advice, support and guidance and help to make the required referrals. If there is a risk of harm, the concerns must be reported to the statutory agencies within 24 hours of the DSA receiving the concerns. This would be Children's or Adult Social Care and/or the police.

There should be close communication between the DSA, PSO/incumbent until the situation is resolved. The archdeacon should also be informed.

**If the concern is about a Church Officer:**

- ix. The DSA will act in line with the House of Bishops' guidance. They will offer advice, support and guidance and refer the concerns to the Local Authority Designated Officer (LADO) and/or police within 24 hours. The DSA will now take over the management of the safeguarding concern in conjunction with the core group (which will be convened within 48 hours) and statutory agencies. There may also be a requirement for parish representatives to attend a subsequent core group(s). If there are doubts about whether or not to make a referral and under what route, the DSA will seek advice from the LADO.

Please note that the procedure is the same for non-recent abuse.

A proper balance must be struck between protecting children and adults and respecting the rights of the person against whom an allegation is made. In such circumstances the welfare of the child, young person or adult must come first. The rights of the person against whom the allegation is made are important and must

be given due weight, once the immediate safety and protection of the child, young person or adult has been assured.

### **7.3 Guidelines for Responding to a Person Disclosing Abuse**

#### **Do:**

- Listen.
- Take what is said seriously.
- Only use open questions (open questions begin with words like: who, what, when, where and how. Open questions cannot be answered with a 'yes' or 'no').
- Remain calm.
- Take into account the person's age and level of understanding.
- Check, if face to face, whether they mind you taking notes while they talk so you can make sure you capture the information accurately. At the end you can check with them that you have understood everything correctly.
- Offer reassurance that disclosing is the right thing to do.
- Establish only as much information as is needed to be able to tell your activity leader/ Parish Safeguarding Officer/ DSA and statutory authorities what is believed to have happened, when and where.
- Check out what the person hopes to result from the disclosure.
- Tell the child or adult what you are going to do next.

#### **Do Not**

- Make promises that cannot be kept (e.g. that you won't share the information).
- Make assumptions or offer alternative explanations.
- Investigate.
- Contact the person about whom allegations have been made.
- Do a physical or medical examination.

#### **Record**

- Make some very brief notes at the time, if appropriate, and write them up in detail as soon as possible.
- Do not destroy your original notes in case they are required by the DSA or the statutory authorities.
- Record the date, time, place, words used and how they appeared to you. Record the actual words used, including any swear words or slang.
- Record facts and observable things, not your interpretations or assumptions.
- Don't speculate or jump to conclusions

#### **Report**

- If there is immediate danger to a child or adult contact the police.
- Otherwise report to your activity leader/Parish Safeguarding Officer/incumbent immediately.
- Within 24 hours the PSO/incumbent reports the concerns to the DSA.



- The DSA will advise regarding reporting to statutory agencies within 24 hours.
- If there is any doubt seek advice from Children's/Adult's Social Care or the police.

#### 7.4. Non-Recent Abuse

Safeguarding concerns or allegations may be about something that is going on now and/or something that may happen in the future (recent) or something that happened in the past (non-recent). Non-recent allegations of abuse must be treated as seriously as recent allegations. Research evidences that it may take up to 25 years or longer for an adult to disclose sexual abuse that happened to him/her either as a child or younger adult. A victim/survivor needs to be aware that if a respondent is known to be currently working with children/vulnerable adults in either a paid or voluntary capacity a referral to the statutory services will be made. The DSA will make this referral.

#### 7.5. Domestic Abuse

The House of Bishops' policy states that 'The Church is committed to those who have been victims and survivors of domestic abuse. Domestic abuse in all its forms is contrary to the will of God and an affront to human dignity. All need to play their part in preventing or halting it'. The welfare of the adult victim of domestic abuse is important, but where there are children in the family it must be understood that they too are victims of domestic abuse. Consideration of the child's welfare always comes first. In all circumstances, contact the DSA who will help clarify the issues and steps needed, which may involve contacting Children's Social Care. There may be a need for a risk assessment and for a Safeguarding Agreement to be put in place. The DSA will undertake this work in conjunction with the parish church and any statutory agencies.

[See Appendix L Statement on Domestic Violence & Abuse.](#)

#### 7.6. Ministry of Deliverance

Concerns may be expressed that a child, young person or adult is troubled by or possessed by evil spirits or demons and that this may account for behavioural issues in the individual or be considered to justify harsh treatment by the family, guardians, friends or carers.

If a church officer, including a member of clergy, becomes aware of the above situation and/or a request is made for deliverance ministry, the parish **must** contact the **DSA** who will contact the appropriate person.

#### 7.7 Record Keeping

The PSO or incumbent must open a record, called a case file whenever a safeguarding concern or allegation occurs in the Church. This should be stored according to Diocesan and GDPR guidelines.

The procedure should follow:

- *Discuss concerns with the DSA 01962 737317 or 07921 865374.*
- *Suspicious must not be discussed with anyone other than those nominated (7.2i).*
- *A written record of the concerns should be made in accordance with church procedures and kept in a secure place.*
- *The PCC will support the PSO in their role, and accept that any information they may have in their possession will be shared in a strictly limited way on a need to know basis.*
- *All reports or concerns must be treated seriously.*

## **8. CARING PASTORALLY FOR VICTIMS/SURVIVORS OF ABUSE AND AFFECTED OTHERS**

The PCC is committed to offering pastoral care and support to those attending the church who have been affected by abuse.

The House of Bishops' Safeguarding Policy 2017 states that 'The Church will endeavour to offer care and support to all those that have been abused, regardless of the type of abuse, when or where it occurred. Those who have suffered abuse within the Church will receive a compassionate response, be listened to and be taken seriously. Our first response to those who have suffered abuse, especially abuse within the Church, should be compassionate; we must listen and take what we are hearing seriously.'

Further information can be found in the Parish Safeguarding Handbook safeguarding website

<https://www.churchofengland.org/sites/default/files/2019-10/ParishSafeGuardingHandBookAugust2019Web.pdf>

## **9. CARING PASTORALLY FOR CHURCH OFFICERS WHO ARE THE SUBJECT OF CONCERNS OR ALLEGATIONS OF ABUSE AND AFFECTED OTHERS**

All church officers who are the subject of a concern will be offered the support of a Link Person in line with Parish Safeguarding handbook.

The DSA will have be notified and will act in line with the House of Bishops' guidance.

## **10. RESPONDING TO THOSE WHO MAY PRESENT A KNOWN RISK TO CHILDREN, YOUNG PEOPLE OR VULNERABLE ADULTS WITHIN A CHRISTIAN CONGREGATION**

The House of Bishops' Safeguarding Policy 2017 states 'The Church, based on the message of the gospel, opens its doors to all. It will therefore endeavour to offer pastoral care and support to any member of the church community whom may present a known risk'.

This means that there are likely to be those with criminal convictions for sexual offences and other forms of abuse attending church. In addition, there may be those who do not have convictions or cautions but where there are sound reasons for considering that they still might pose a risk to others. Where people may pose a risk to others, their position in a congregation will need to be carefully and sensitively assessed to decide whether they pose a present risk to others and to put in place arrangements to ensure that these risks are mitigated. In these circumstances it is not only about monitoring individuals but offering support to lead a fulfilled life. As such, the Church has an important role in contributing to the prevention of future abuse.

## **TAKING ACTION TO THOSE SUSPECTED OF POSING A RISK**

Always contact the DSA as soon as practicable, but within 24 hours, if you learn that any of the following people worship in your church:

1. Anyone placed on the sex offenders register, with a violent offence or conviction and/or who is barred from working with children or adults by the Disclosure and Barring Service.
2. Anyone who admits to being an abuser including non-recent abuse.
3. Anyone who is subject to an investigation for suspected abuse, including possession of indecent images of children, and/or is suspended from their usual role.
4. Anyone who may pose a risk to other church members due to their behaviour, irrespective of their criminal status.

Category (4) above may include a person in relation to whom:

- An allegation of abuse against a child or adult has been investigated, but the matter has not proceeded to court, or the person has been acquitted, or the matter is currently the subject of proceedings in the criminal or civil courts but the person may still pose a risk.
- A complaint or grievance has been received alleging inappropriate behaviour, which is not criminal.
- There have been concerns about the person's alleged abusive behaviour to a previous or current partner.

If the DSA is made aware by any other source of any person in the above categories who is intending to or is worshipping at a local parish church, they will notify the Parish Safeguarding Officer/incumbent in the first instance.

The DSA will determine the appropriate action to be taken to best safeguard the parish and its congregation, based on the particular facts and circumstances of each case. They will undertake a risk assessment and the formation of a risk management plan known as a Safeguarding Agreement.

## **11. A SAFE ENVIRONMENT AND ACTIVITIES**

The House of Bishops' Safeguarding Policy Statement states that 'The Church will strive to create and maintain environments that are safer for all, that promote well-being, that prevent abuse, and that create nurturing, caring conditions within the Church for children, young people and vulnerable adults...The Church will strive to support all church officers to adhere to safer working good practice and to challenge the abuse of power'.

## **11.1 CODE OF SAFER WORKING PRACTICE**

**All those working on behalf of the parish with children, young people and adults must:**

- Treat all individuals with respect and dignity.
- Ensure that their own language, tone of voice, and body language is respectful.
- Ensure that children, young people and adults know who they can talk to about a personal concern.
- Record and report any concerns about a child, young person or adult and/or the behaviour of another worker with their activity leader and/or Parish Safeguarding Officer. Sign and date the record.
- Obtain written consent for any photographs/videos to be taken, shown, displayed or stored.
- Administer any First Aid with others around.

**In addition, for children and young people must:**

- Always aim to work with or within sight of another adult.
- Ensure another adult is informed if a child needs to be taken to the toilet. Toilet breaks should be organised for young children.
- Respond warmly to a child who needs comforting but make sure there are other adults around.
- Ensure that the child and parents are aware of any activity that requires physical contact and its nature before the activity takes place.

**All those working on behalf of the parish with children, young people and adults must not:**

- Invade an individual's privacy whilst washing and toileting.
- Use any form of physical punishment.
- Be sexually suggestive about or to an individual.
- Scapegoat, ridicule or reject an individual or group.
- Permit abusive peer activities e.g. initiation ceremonies, ridiculing or bullying.
- Show favouritism to any one individual or group.
- Allow an individual to involve you in excessive attention seeking.
- Allow unknown adults access to children, young people and adults that may be vulnerable. Visitors should always be accompanied by an approved person.
- Allow strangers to give children, young people and adults who may be vulnerable in the group, lifts.
- Befriend children, young people and adults who may be vulnerable on social media.

- Take photographs on personal phones or cameras as this means that images are stored on personal devices.

**In addition, for children and young people, must not;**

- Give lifts to children you are supervising, on their own or your own (unless there are exceptional circumstances e.g. in an emergency for medical reasons or where parents fail to collect a child and no other arrangements can be made to take a child home. In such situations, the circumstances and your decision must be recorded and shared with an appropriate person at the earliest opportunity).
- Smoke or drink alcohol in the presence of children and young people.
- Arrange social occasions with children and young people (other than events which also include adult family members/carers) outside organised group occasions.

## **11.2 ACCEPTABLE TOUCH**

Sympathetic attention, humour, encouragement and appropriate physical contact are needed by children and adults. Some physical contact with children, particularly younger children, is wholly appropriate. The following guidelines regarding touching are suggested:

- **Always** ask permission.
- Be mindful of your body position.
- Keep everything public. A hug in the context of a group is very different from a hug behind closed doors.
- Touch should be in response to a child's needs and not related to the worker's needs. It should be age appropriate, welcome and generally initiated by the child, not the church officer.
- Avoid any physical contact that is or could be construed as sexual and/or abusive/offensive.
- Allow the child to determine the degree of physical contact with others except in exceptional circumstances (e.g. when they need medical attention).

In addition:

- ✓ You can allow people you support to give you brief hugs if you feel comfortable with this.
- ✓ You can allow people you support to hold hands or link arms with you to help with travel and stability.
- ✓ You should discourage people you support from touching your face. You can offer your hand instead.
- ✓ You should discourage people you support from sitting on your lap. You can offer to sit side by side.

- ✓ You should avoid using touch if the person you support is very distressed and is unlikely to tolerate it.

Ensure that church officers at all levels must take responsibility for monitoring one another in the area of physical contact. They should be encouraged to challenge one another if necessary. Concerns about possible abuse or inappropriate behaviour should always be reported.

### 11.3 CHILDREN'S ACTIVITIES

Church groups that involve children need to ensure good practice standards across a wide range of areas including: recruitment of activity leaders; DBS checking; staffing ratios; suitability of premises; health and safety arrangements; and facilities for children with special needs.

The minimum staffing levels for groups should be as follows:

0 – 2 years	1 adult to 3 children	1:3
2 – 3 years	1 adult to 4 children	1:4
4 – 8 years	1 adult to 6 children	1:6
9 – 12 years	1 adult to 8 children	1:8
13 – 18 years	1 adult to 10 children	1:10

Each group should have at least two workers, even for smaller groups, and if possible one male and one female. Staff ratios for all groups should always be based on a risk assessment. For example, staffing numbers would need to be increased for outdoor activities and more so if that activity is considered higher risk, potentially dangerous or when children with disabilities or special needs are involved.

For all groups and activities:

- Undertake a health and safety risk assessment
- A registration form must be completed for every child or young person who attends groups or activities which should include up to date information on parents' contact numbers, medical information (e.g. allergies) and any special needs
- An attendance register must be kept and be available at all group meetings.
- A First Aid kit must be available on any premises that are used by children.
- An accident and incident logbook must be available, and all accidents recorded. The logbook should be stored in a secure place. Any significant incidents must be recorded (e.g. a fight between children).
- There should be access to a telephone, if possible.
- In church premises where children's groups meet, the Childline and Family Lives telephone numbers should be displayed.
- Parents must sign a consent form before children are transported in a private car, and before any photography or images are taken.

In addition, when taking children offsite

- The church leadership must be informed and agree to the activity.
- Details of the activity and any itinerary must be given in advance to parent/s and consent forms received in advance of the activity taking place.
- Details of the activity and a list of contacts must be left with someone in the church.
- Details of the activity and arrangements must be given to the incumbent and/or PSO.
- A risk assessment must be undertaken, and confirmation obtained that the activity is covered by PCC insurance.
- A leader must be designated to take responsibility for First Aid.

Many of these items are equally applicable to groups involving vulnerable adults.

#### **11.4 VISITING ADULTS**

Visiting vulnerable adults in their homes is an essential element of many church officers' roles. Many parishioners will be well known to the church officer and where there have been no previous concerns the level of risk to the church officer or parishioner during visits will usually be low. However, unexpected circumstances can be encountered, some of which may place a church officer at risk. For example, the unexpected presence in the home of a relative or friend with a history of violence or threatening behaviour. Unfortunately, case histories also show that a parishioner may be at risk from a church officer. For these reasons it is very important for parishes to ensure their church officers and parishioners are as safe as they can be, and that there is accountability and transparency in the manner in which church officers engage in lone working or visits to homes.

To assure the person you are visiting of their safety, and for your own as a church officer:

- If possible undertake a risk assessment before an initial visit, especially if you do not know the person. If there are any concerns or risks known before a visit is made, you are always advised to undertake a risk assessment. In these circumstances, consider whether the visit is necessary, or whether you should be accompanied by another church officer. In addition, visiting in pairs may be advisable, especially if the adult is perceived to be vulnerable.
- Do not call unannounced; call by appointment, if appropriate telephoning the person just before visiting.
- Be clear about what support you can offer and the purpose and limitations of any pastoral care/ support that is available.
- Do not make referrals to any agency that could provide help without the adult's permission, and ideally encourage them to set up the contact, unless there are safeguarding concerns.
- Never offer "over the counter" remedies to people on visits or administer prescribed medicines, even if asked to do so.
- Do not accept any gifts from adults other than token items, to avoid misunderstandings or subsequent accusations from the person or their family.

If someone wants to make a donation to the church, put it in an envelope, mark it on the outside as a donation and obtain a receipt from the Treasurer.

- Make a note of the date when you visit people, report back about the visit to the agreed named person and say what is concerning or going well. They will report safeguarding concerns to the Parish Safeguarding Officer and/or incumbent or directly to the DSA if they are not available.

## **12. USE OF SOCIAL MEDIA**

Social media sites enable users to create and share content and keep in touch with other users. They include maintaining a profile on a networking site such as Facebook, Twitter, Instagram, Snapchat; writing or commenting on a blog, whether it is your own or the blog of another person; and taking part in discussions on web forums or message boards. For many, especially young people, using social media is an extension of physical face-to-face relationships. It is therefore important that churches also engage with their community and worshippers through these platforms. However, this must be done safely to avoid the risk of:

- Forming inappropriate relationships.
- Saying things you should not, such as offensive, sexual or suggestive comments.
- Blurring the boundaries between public work/ministry and your private life.
- Grooming and impersonation.
- Bullying and harassment.

Guidance for church officers

### **Do:**

- ✓ Have your eyes open and be vigilant.
- ✓ Maintain the utmost integrity – honesty, transparency, consistency and accountability are key. Treat online communication with children, young people and adults as you would communication that is face to face. Always maintain the same level of confidentiality.
- ✓ Report any safeguarding concerns that arise on social media to the PSO and the DSA.
- ✓ Always assume that everything you write is permanent and may be viewed by anyone at any time; and that everything can be traced back to you personally as well as to your colleagues or the church. Always think before you post.
- ✓ Draw clear boundaries around your social media usage associated with your private life and your use of different social media for public ministry. Keep church account/s and profiles separate from your personal social media account/s e.g. only use a Facebook page, Twitter or blogs for public ministry, while keeping a separate Facebook profile for private life.



- ✓ Always ask parents/carers for written consent to:
  - Use and store photographs of children/young people from activities or events in official church publications, or on the church's social media, website and displays.
  - Use telephone, text message, email and other messaging services to communicate with young people.
  - Allow young people to connect to the church's social media page
  
- ✓ Only use an approved church/ministry account to communicate with children, young people and/or vulnerable adults. The named person should be able to access this and review conversations, and the account should be visible to young people and their parents. Young people must be made aware that any communication will be viewed by all users. Save any messages and threads through social networking sites, so that you can provide evidence to the named person of your exchange when required.
  
- ✓ Avoid one-to-one communication with a child or young person.
  
- ✓ Use clear and unambiguous language in all communications and avoid abbreviations that could be misinterpreted.
  
- ✓ Save and download to hard copy any inappropriate material received through social networking sites or other electronic means and show immediately to the named person, PSO, incumbent or, if appropriate, Diocesan Safeguarding Adviser.
  
- ✓ Use passwords and log off promptly after use to ensure that nobody else can use social media pretending to be you.

**Do not:**

Use a personal Facebook or any other social media account in your work with children, young people or vulnerable adults.

Add children, young people or vulnerable adults as friends on your personal accounts.

Facebook stalk (i.e. dig through people's Facebook pages to find out about them).

Say anything on social media that you would not be happy saying in a public meeting, to someone's face, writing in a local newspaper or on headed notepaper.

Comment on photos or posts, or share content, unless appropriate to your church role.

Use visual media (e.g. Skype, Facetime, Zoom) for one-to-one conversations with young people – use only in group settings.

**In particular, do not allow content to contain or share links to other sites that contain:**

Libellous, defamatory, bullying or harassing statements.

Breaches of copyright and data protection.

Material of an illegal nature.

Offensive sexual or abusive references.

Inappropriate language.

Anything which may be harmful to a child, young person or vulnerable adult, or which may bring the church into disrepute or compromise its reputation.

## **CONTACT DETAILS:**

DSA/ Safeguarding Manager: Jackie Rowlands

Email: [safeguarding@winchester.anglican.org](mailto:safeguarding@winchester.anglican.org)

Tel: 01962 737317

Mobile 07921865374

Out of hours number: 0300 555 1373

Southampton Children First team: 023 8083 3336

[children.first@southampton.gov.uk](mailto:children.first@southampton.gov.uk)

Out of hours Emergency Duty Team: 023 8023 3344

Adult Social Care 02380833003

Out of office hours 02380233344

[adultsocialcareconnect@southampton.gov.uk](mailto:adultsocialcareconnect@southampton.gov.uk)

If a child young person or vulnerable adult is in immediate danger, contact the Police on 999

Parish Safeguarding officer: Rosemary Brooks

Email: [rosemary.brooks@stjamesbythepark.org](mailto:rosemary.brooks@stjamesbythepark.org)

Tel: 07593 535570

## **FURTHER INFORMATION**

The Diocesan website gives access to a number of relevant documents at

<http://www.winchester.anglican.org/safeguarding/>



# **CHILD, YOUNG PERSON AND VULNERABLE ADULT SAFEGUARDING POLICY APPENDICIES**

## **APPENDIX A: POSSIBLE INDICATORS OF ABUSE**

The following signs may or may not be indicators that abuse has taken place, but the possibility should be considered. (Many children may exhibit some of these indicators at some time, and the presence of one or more should not be taken as proof that abuse is occurring. There may well be other reasons for changes in behaviour such as a death, or the birth of a new baby in the family, or relationship problems between parents/carers. In assessing whether indicators are related to abuse or not, it is important to understand them in relation to the child's development and context.)

### **SIGNS WHICH MAY INDICATE PHYSICAL ABUSE AND/ OR NEGLECT**

- Any injuries not consistent with the explanation given for them
- Injuries that occur to the body in places that are not normally exposed to falls, rough games
- Injuries that have not received medical attention
- Neglect -under nourishment, failure to grow, constant hunger, stealing or gorging food, untreated illnesses, inadequate care
- Reluctance to change for, or participate in, games or swimming
- Repeated urinary infections or unexplained tummy pains
- Bruises, bites, burns, fractures which do not have an accidental explanation
- Cuts/scratches/substance abuse
- 

### **POSSIBLE INDICATORS OF SEXUAL ABUSE**

- Any allegations made by a child concerning sexual abuse
- Child with excessive preoccupation with sexual matters and detailed knowledge of adult sexual behaviour, or who regularly engages in age-inappropriate sexual play
- Sexual activity through words, play or drawing
- Child who is sexually provocative or seductive with adults
- Inappropriate bed-sharing arrangements at home
- Severe sleep disturbances with fears, phobias, vivid dreams or nightmares, sometimes with overt or veiled sexual connotations
- Eating disorders -anorexia, bulimia
- 

### **POSSIBLE INDICATORS OF EMOTIONAL ABUSE**

- Changes or regression in mood or behaviour, particularly where a child withdraws or becomes clinging.
- Also depression, aggression or extreme anxiety.
- Nervousness, frozen watchfulness
- Obsessions or phobias
- Sudden under-achievement or lack of concentration
- Inappropriate relationships with peers and/or adults

- Attention-seeking behaviour
- Persistent tiredness
- Running away/stealing/lying

Any signs that may indicate evidence of self-harm (e.g. cutting, burning, self-poisoning or food control)

## **APPENDIX B FACT SHEET – SEXTING (YOUTH PRODUCED SEXUAL IMAGERY)**

### **Defining Sexting**

Many people working with young people consider sexting to be 'sending or posting sexually suggestive images, including nude or semi-nude photographs, via mobiles or over the Internet. Many parents think of sexting as flirty or sexual text messages rather than images. Young People however are more likely to interpret sexting as 'writing and sharing explicit messages with people they know'.

Sexting may be thought of as "youth produced sexual imagery" and refers to the type of incident in which:

A person under the age of 18 creates and shares sexual imagery of themselves with a peer under the age of 18

A person under the age of 18 shares sexual imagery created by another person under the age of 18 with a peer under the age of 18 or an adult

A person under the age of 18 is in possession of sexual imagery created by another person under the age of 18

'Youth produced sexual imagery' best describes the practice because:

'Youth produced' includes young people sharing images that they, or another young person, have created of themselves.

'Sexual' is clearer than 'indecent.' A judgement of whether something is 'decent' is both a value judgement and dependent on context.

'Imagery' covers both still photos and moving videos

**The sharing of sexual imagery of people under 18 by adults constitutes child sexual abuse and the Police and Diocesan Safeguarding Adviser should be informed immediately**

### **Sexting and the Law**

The relevant legislation is contained in the Protection of Children Act 1978 (England and Wales) as amended in the Sexual Offences Act 2003 (England and Wales).

If a child is under the age of 18, it is illegal for them to take a nude photo of themselves or a friend, as well as distributing them. Even though the age of sexual consent is 16, the Protection of Children Act means it is against the law for a child to share a sexual image, even if it is with someone who is also under the age of 18. Images covered under the law include, but are not limited to, naked pictures, topless photos of girls, genitals, masturbation, any sex acts and sexual images in underwear.

If it is found that a child under the age of 18 is in possession of any of these, has been sending them or taking these types of photos, the police can record it as a crime. However, since the start of 2016, the police can simply record the crime, but

take no further action if it isn't in the public interest. This means that it is unlikely to show up in future records. This decision is totally at the discretion of the police, who will judge on a case by case basis.

'Indecent' is not defined in legislation. When cases are prosecuted, the question of whether any photograph of a child is indecent is for a jury, magistrate or District Judge to decide based on what is the recognised standard of propriety.

1

### **Responding to incidents involving youth produced sexual imagery**

Refer the incident to the Diocesan Safeguarding Adviser as soon as possible. The Diocesan Safeguarding Adviser will ensure that parents should be informed at an early stage and involved in the process unless there is good reason to believe that involving parents would put the young person at risk of harm. At any point in the process if there is a concern a young person has been harmed or is at risk of harm a referral will be made to children's social care and/or the police immediately.

#### ***An immediate referral to police and/or children's social care will be made and if at the initial stage:***

The incident involves an adult

There is reason to believe that a young person has been coerced, blackmailed or groomed, or if there are concerns about their capacity to consent (for example owing to learning difficulties)

What is known about the imagery suggests the content depicts sexual acts which are unusual for the young person's developmental stage, or are violent

The imagery involves sexual acts and any pupil in the imagery is under 13

There is reason to believe the young person is at immediate risk of harm owing to the sharing of the imagery, for example, the young person is presenting as suicidal or self-harming

**If a young person has shared imagery consensually**, such as when in a romantic relationship, or as a joke, and there is no intended malice, refer the matter to the Diocesan Safeguarding Adviser in the first instance and a decision will be made jointly about next steps. If a young person shares someone else's imagery without consent and with malicious intent, this will generally be referred to police and/or children's social care.



## APPENDIX C: MODEL VOLUNTEER JOB **ROLE**

This is a simple model role outline template for a volunteer which can be used, amended or substituted by a local model as required.

**Name of Church:**.....

### **Volunteer Worker (Children and /or adults experiencing, or at risk of abuse or neglect)**

The Church takes the safety of everyone within the church very seriously and expects that everyone will work within the church safeguarding policy. In particular, the Church expects anyone who becomes aware of a safeguarding risk or of actual abuse, to immediately report it.

#### **Principles**

Workers with children and/or adults experiencing, or at risk of abuse or neglect must have a commitment to:

- Treat individuals with respect;
- Recognise and respect their abilities and potential for development;
- Promote their rights to make their own decisions and choices, unless it is unsafe;
- Ensure their welfare and safety;
- The promotion of social justice, social responsibility and respect for others; and
- Confidentiality, never passing on personal information, except to the person to whom you are responsible, unless there are safeguarding issues of concern (e.g. allegations of abuse). Safeguarding issues of concern must **always** be reported to the Police or Social Care services and Diocesan Safeguarding Adviser.

#### **Responsible to (named contact for support and resolution of any difficulties):**

The Priest (or his / her named representative) and through them to the PCC.

#### **Key responsibilities and accountabilities:**

- To work with vulnerable people (children and adults experiencing, or at risk of abuse or neglect) in a way that meets and develops their personal, spiritual and social needs, exercising active pastoral concern.
- To represent the needs and views of vulnerable people to the PCC or, where appropriate, enable them to do this for themselves.
- To maintain a link with parents and carers.
- To work in accordance with the church's policy on safeguarding.
- To undertake any other work that has been agreed and is seen to be appropriate.

#### **As a volunteer you can expect that we will do our best to ensure that:**

We provide a supportive, inclusive and positive environment that ensures you enjoy your volunteering and that you are treated with respect and courtesy and provided with training.

**Person specification**

- 1. Able to demonstrate an ability to work with people who are /may be vulnerable; and
- 2. A willingness to develop their skills and training

As a volunteer working regularly with people who are/may be vulnerable, this post may be eligible for a criminal record check which will be renewed at least every five years.

This letter is binding in honour only; it is not intended to create a legally binding contract between us and it may be cancelled at any time at the discretion of either party. Neither of us intend any employment relationship to be created either now or at any time in the future.

-----  
This can be supplemented by reference to specific roles e.g. Crèche Assistant (supervising babies and toddlers in a separate room during Sunday services), Sunday School Teacher (teaching children away from the main service), Pastoral Assistant (who visits people with special needs who cannot get to church.) Children or Youth Worker (running activities on church premises). Outreach Worker (working with vulnerable people away from the church setting).

## APPENDIX D MODEL ROLE APPLICATION FORM

### Application form

This is a simple model application form template for a volunteer which can be used, amended or substituted by a local model as required.

Application form for voluntary workers with children and / or adults experiencing, or at risk of abuse or neglect.

Application for the post of:

Full Name: Date of birth	Previous experience of working with children, or vulnerable adults. - continue overleaf if necessary
Former Name:	
Home address  Postcode Telephone: Day: Evening:	
How long have you lived at the above address? If less than 12 months Previous address  Postcode How long there?	Please provide two references one of which must be from current employer or previous church or professional person <b>(they cannot both be from this church)</b> . Name Address Postcode Tel:
Church currently attended Name of Minister	
Relevant Qualifications / Training	Signed  Print Name  Date

## APPENDIX E: REFERENCE REQUEST LETTER

This is a simple model reference form template for a volunteer which can be used, amended or substituted by a local model as required.

### Name of Church

Name and address of referee:	Name and address of Priest or their nominee requesting a reference:
Date	

Dear

### REQUEST FOR REFERENCE FOR A VOLUNTARY WORKER WITH CHILDREN / ADULTS EXPERIENCING, OR AT RISK OF ABUSE OR NEGLECT

RE: Mr, Mrs, Miss, Ms,  
Address:

Post applicant applying for:

The above has given your name as someone who may be contacted in relation to his / her\* application to work with children / adults experiencing, or at risk of abuse or neglect. Guidelines suggest that all voluntary organisations including Churches must take steps to safeguard the children/adults experiencing, or at risk of abuse or neglect entrusted to their care. I would be grateful if you could comment on the following factors as they may apply to the applicant:-

- Previous experience of working with children or adults experiencing, or at risk of abuse or neglect.
- His / her\* ability to provide kind and consistent care.
- Evidence of his / her\* willingness to respect the background and culture of children and adults experiencing, or at risk of abuse or neglect in his / her\* care.
- His / her\* commitment to treat all children and adults experiencing, or at risk of abuse or neglect as individuals and with equal concern.
- Any evidence or concern that he / she\* would not be suitable to work with children and adults experiencing, or at risk of abuse or neglect.

You are welcome to use the reverse of this letter for your reply. Thank you for your assistance.

Yours sincerely

Priest or Nominee

How long have you known the applicant? .....years

His / her\* previous experience of working with children / adults experiencing, or at risk of abuse or neglect:

His / her\* ability to provide kind, consistent and safe care:

Evidence of his / her\* willingness to respect the background and culture of children/adults experiencing, or at risk of abuse or neglect in his / her\* care:

His/ her\* commitment to treat all children / adults experiencing, or at risk of abuse or neglect as individuals and with equal concern:

Any evidence or concern that he / she\* would not be suitable to work with children / adults experiencing, or at risk of abuse or neglect?

Telephone contact point for clarification:

*\*Please delete as appropriate*

## APPENDIX F: MODEL CONFIDENTIAL DECLARATION FORM

Shirley Parish Church (also known as St James by the Park), Shirley, Southampton.

*The Confidential Declaration Form must be completed by all those wishing to work with children and / or adults experiencing, or at risk of abuse or neglect. It applies to all roles, including clergy, employees, ordinands and volunteers who are to be in substantial contact with children and / or adults experiencing, or at risk of abuse or neglect. This form is strictly confidential and, except under compulsion of law, will be seen only by those involved in the recruitment / appointment process and, when appropriate, the Diocesan Safeguarding Adviser or someone acting in a similar role / position. All forms will be kept securely in compliance with the Data Protection Act 1998.*

*If you answer yes to any question, please give details, on a separate sheet if necessary, giving the number of the question which you are answering.*

*Please note that the Disclosure and Barring Service (DBS) is an independent body, which came into existence on 1<sup>st</sup> December 2012. It combines the functions of the Criminal Records Bureau (CRB) and the Independent Safeguarding Authority (ISA).*

**If the role you have applied for is not eligible for a DBS check you MUST only answer questions 1 and 2 of this form**

1. Have you ever been convicted of or charged with a criminal offence or been bound over to keep the peace that has not been filtered in accordance with the DBS filtering rules? (Include both 'spent' and 'unspent' convictions) YES / NO
2. Have you ever received a caution, reprimand or warning from the police that has not been filtered in accordance with the DBS filtering rules<sup>1</sup>? YES / NO

---

<sup>1</sup> You do not have to declare any adult caution where: (a) 6 years (or 2 years if under 18 at the time of the caution, reprimand or warning) have passed since the date of the caution etc. and (b) it does not appear on the DBS's list of specified offences referred to in footnote 1 above. **Please note that a caution etc. must comply with (a) and (b) in order to be filtered**

*Notes applicable to questions 1 and 2: Declare all convictions, cautions, warnings, and reprimands etc. that are not subject to the DBS filtering rules. Please also provide details of the circumstances and/or reasons that led to the offence(s).*

*Broadly, where your position / role involves substantial contact with children and / or adults experiencing, or at risk of abuse or neglect (i.e. where you are eligible for an enhanced criminal records check) you will be expected to declare **all** convictions and / or cautions etc., even if they are 'spent' provided they have not been filtered by the DBS filtering rules.*

***If your position / role does not involve substantial contact with children and / or adults experiencing, or at risk of abuse or neglect you should only declare 'unspent' and 'unfiltered' convictions / cautions etc.***

*Convictions, cautions etc. and the equivalent obtained abroad must be declared as well as those received in the UK.*

*If you are unsure of how to respond to any of the above please seek advice from an appropriate independent representative (e.g. your solicitor) because any failure to disclose relevant convictions, cautions etc. could result in the withdrawal of approval to work with children and / or adults experiencing, or at risk of abuse or neglect. Although it is important to note that the existence of a conviction, caution etc. will not necessarily bar you from working with vulnerable groups unless it will place such groups at risk.*

3. Are you at present (or have you ever been) under investigation by the police or an employer or other organisation for which you worked for any offence / misconduct? YES / NO
4. Are you or have you ever been prohibited and / or barred from work with children and/or vulnerable adults? YES / NO
5. Has a family court ever made a finding of fact in relation to you, that you have caused significant harm to a child and / or vulnerable adult, or has any such court made an order against you on the basis of any finding or allegation that any child and / or vulnerable adult was at risk of significant harm from you?  
YES / NO



6. Has your conduct ever caused or been likely to cause significant harm to a child and / or vulnerable adult, and / or put a child or vulnerable adult at risk of significant harm? YES / NO

*Note: Make any statement you wish regarding any incident you wish to declare*

7. To your knowledge, has it ever been alleged that your conduct has resulted in any of those things? YES / NO
8. Have you ever had any allegation made against you, which has been reported/referred to, and investigated by the Police/Social Services/Social Work Department (Children or Adult's Social Care)? YES/NO

If you reply yes to questions 7 and/or 8, please give details, which may include the date(s) and nature of the allegation, and whether you were dismissed, disciplined, moved to other work or resigned from any paid or voluntary work as a result.

*Note: Declare any complaints or allegations made against you, however long ago, that you have significantly harmed a child, young person or adult who is vulnerable. Any allegation or complaint investigated by the police, Children's Services, an employer, voluntary body or other body for which you worked must be declared. Checks will be made with the relevant authorities.*

9. Has a child in your care or for whom you have or had parental responsibility ever been removed from your care, been placed on the Child Protection Register or been the subject of child protection planning, a care order, a supervision order, a child assessment order or an emergency protection order under the Children Act 1989, or a similar order under any other legislation? YES / NO
10. If you are working from home with children, is there anyone who is 16 years of age or over living or employed in your household who has ever been charged with, cautioned or convicted in relation to any criminal offence not subject to DBS filtering rules<sup>2</sup>; or is that person at present the subject of a criminal investigation/pending prosecution? YES/NO/Not Applicable

---

<sup>2</sup> See footnotes 25 and 27 above

If yes, please give details including the nature of the offence(s) and the dates. Please give any further details, such as the reasons or circumstances, which led to the offence(s)

*Note applicable to Q10: You are only required to answer this if you work from home with children. The DBS define home based working as where the applicant for the DBS check carries out some or all of his or her work with children or adults from the place where the applicant lives (this will include **all** clergy).*

*Note: All these matters shall be checked with the relevant authorities*

**Declaration**

I declare the above information (and that on any attached sheets) is true, accurate and complete to the best of my knowledge.

After I have been appointed I agree to inform my line manager or supervisor if I am charged, cautioned or convicted of any offence or if I become subject to a Police/Social Services/Social Work Department (Children or Adult’s Social Care) investigation.

Signed.....  
Full Name.....Date of Birth.....  
Address.....  
.....  
.....  
Date.....  
Please return the completed form to  
.....

*Before an appointment can be made applicants who will have substantial contact with children and / or adults experiencing, or at risk of abuse or neglect in their roles will be required to obtain an enhanced criminal record check (with or without a barred list check (as appropriate)) from the Disclosure and Barring Service.*

*All information declared on this form will be carefully assessed to decide whether it is relevant to the post applied for and will only be used for the purpose of safeguarding children, young people and / or adults experiencing, or at risk of abuse or neglect.*

*Please note that the existence of a criminal record will not necessarily prevent a person from being appointed, it is only if the nature of any matters revealed may be considered to place a child and / or an adult experiencing, or at risk of abuse or neglect at risk.*

## **APPENDIX G: MODEL INTERVIEW/DISCUSSION**

This is a simple model interview / discussion form template for a volunteer which can be used, amended or substituted by a local model as required.

### **Name of Church**

### **Interview / discussion questions for a volunteer seeking to work with children / adults experiencing, or at risk of abuse or neglect and outcome**

The purpose of the interview / discussion is to explore the applicant's suitability. Notes of the interview / discussion must be retained and attached to this form which must be returned to the Priest to be held on behalf of the PCC. The following factors must be addressed:

Name and address of applicant:

1. What experience have you of working with children / adults experiencing, or at risk of abuse or neglect?
2. Can you give an example of something that you have done that demonstrates your commitment to working with vulnerable groups (i.e. children and/or adults experiencing, or at risk of abuse or neglect)?
3. Can you give some examples of how you would provide kind, consistent and safe care?
4. Can you describe how you would respect the background and culture of children / adults experiencing, or at risk of abuse or neglect with whom you would volunteer?
5. How would you treat all children / adults experiencing, or at risk of abuse or neglect as individuals with equal concern?
6. Do you know of any reason why you should not be working with children or adults experiencing, or at risk of abuse or neglect? Are there any police or employment matters outstanding which could affect your ability to volunteer?

### **Outcome**

Are there any issues in the Confidential Declaration?	YES / NO
Do the references support the appointment?	YES / NO
Do you recommend their approval to the PCC?	YES / NO

Signed:

Name (Print):

Date Approved by PCC:

Date

## **APPENDIX H: MODEL APPOINTMENT LETTER**

Dear

### **APPOINTMENT TO THE POST OF**

Thank you for agreeing to volunteer with us. As you will no doubt be aware, volunteers are essential part of Church life. We do hope that you enjoy volunteering with us and feel part of the team.

XXXXXXX will induct you into the role and show you around.

I should be grateful if you would contact me to arrange a convenient time for your induction and tour and also to confirm when you would like to start.

In the meantime, please find attached:

- Your role outline;
- a copy of the Church's Statement of Safeguarding principles; and
- what to do if..... notes on what to do if there are serious concerns.

Safeguarding training will be provided in the next round of training delivery.

If there is anything further I can help you with at this stage, please do let me know.

On behalf of the PCC, I thank you for your interest and I look forward to welcoming you to our team.

Yours sincerely,

On behalf of the PCC

# APPENDIX I: SAFEGUARDING TRAINING

The House of Bishops' Safeguarding Policy states that the Church 'will train and equip church officers to have the confidence and skills they need to care and support children, young people and vulnerable adults and to recognise and respond to abuse.'

The Training and Development Framework outlines the core safeguarding training that is available from the diocese.

C0 - Basic Awareness	Recommended for anyone who needs a basic level of awareness of safeguarding This module is also a pre-requisite Attendance at any other core training module.
C1 - Foundation	Required for anyone who has safeguarding responsibilities/ contact with children and/or vulnerable adults.
C2 - Leadership	Required for anyone who has safeguard leadership responsibilities and/or leads activities involving children and/or vulnerable adults.
C3 - Clergy and Lay Ministers	Those holding a license, commission authorisation, permission to officiate from Bishop, ordained or lay.
C4 - Senior Staff	Senior staff who have key roles in safeguarding policy, strategy and practice
C5 - Refresher	To be undertaken every three years by those who have completed C1, C2 or C3.

## Who gets what training in the parish?

### Basic Safeguarding Awareness

CO is a basic safeguarding awareness course that can be completed by any member of the

Congregation, to improve their understanding of abuse and enable them to help build a culture of informed vigilance within the Church. It can be undertaken online at

<https://safeguardingtraining.cofeportal.org/login/index.php>.

However, it is recommended that the following roles are encouraged to complete it:

Vergers, servers, welcomers, caretakers, refreshment helpers, shop staff, sidespersons, flower arrangers, administrative staff, bell ringers, choir members/music group members (including sound/AV).

Parish\_Safeguarding\_Handbook\_October\_2018.1.pdf - Foxit Reader

FILE HOME COMMENT VIEW FORM PROTECT SHARE FOXIT CLOUD HELP

Start Parish\_Safeguarding\_Ha... x

Pages

18

19

20

21

Vergers, servers, welcomers, caretakers, refreshment helpers, shop staff, sidespersons, flower arrangers, administrative staff, bell ringers, choir members/music group members (including sound/AV).

**Additional Core Training Requirements**

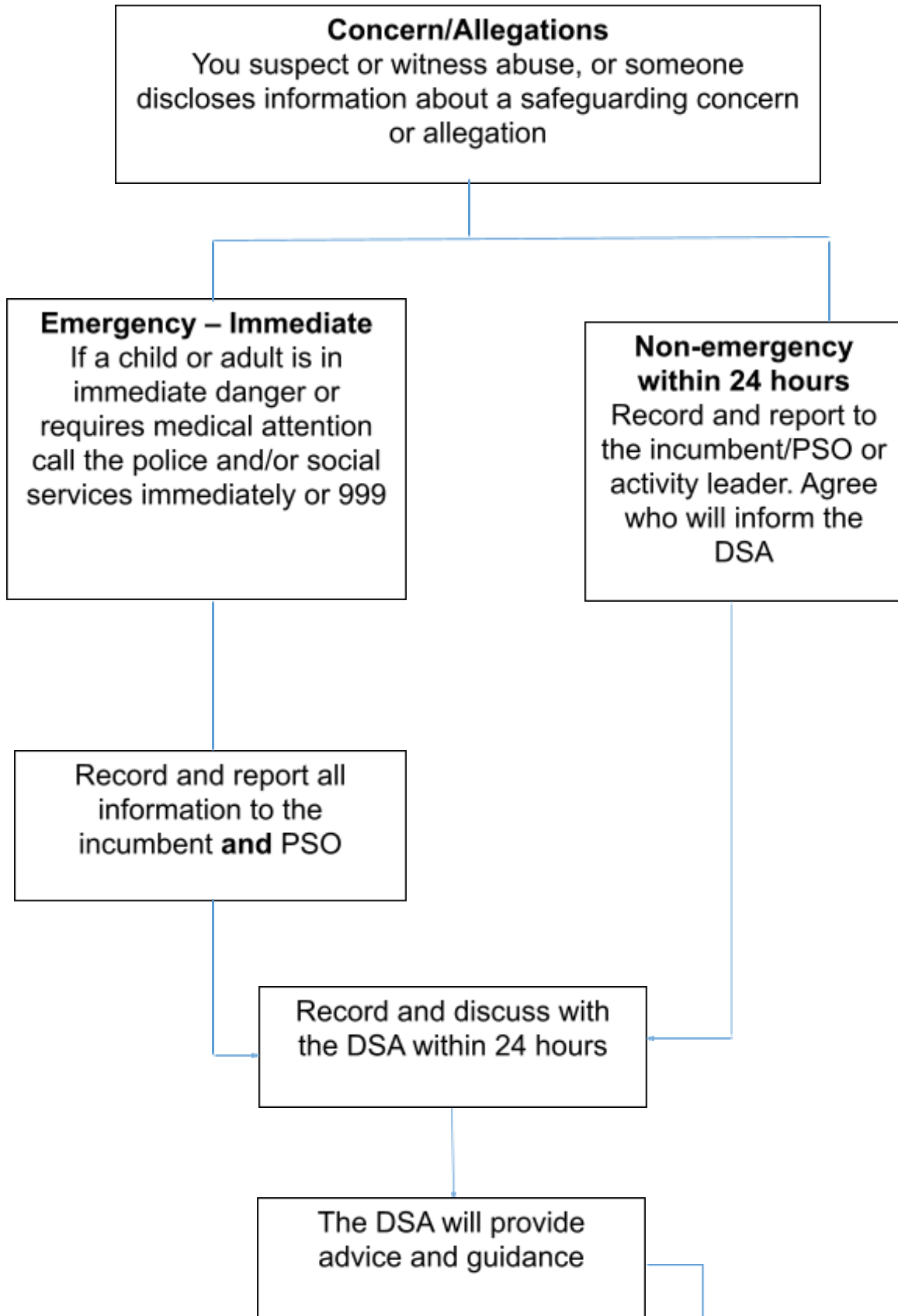
Role	CO	C1	C2	C3	C5
Incumbent and clergy, including those that hold PTO	✓	x	x	✓	✓
Licensed lay ministers e.g. readers	✓	x	x	✓	✓
Parish workers with children/vulnerable adults (paid or volunteer)	✓	✓	x	x	✓
Leaders/supervisors of work with children/vulnerable adults (paid or volunteer)	✓	✓	✓	x	✓
Parish safeguarding officers	✓	✓	✓	x	✓
Church operations managers	✓	✓	x	x	✓
Church wardens	✓	✓	✓	x	✓
PCC members	✓	x	x	x	x
PCC safeguarding leads	✓	✓	✓	x	✓
Youth and children's pastors (if not ordained or licensed)	✓	✓	✓	x	✓
Music group leaders/ choir leaders	✓	✓	✓	x	✓
Bell tower captains	✓	✓	✓	x	✓

Documents

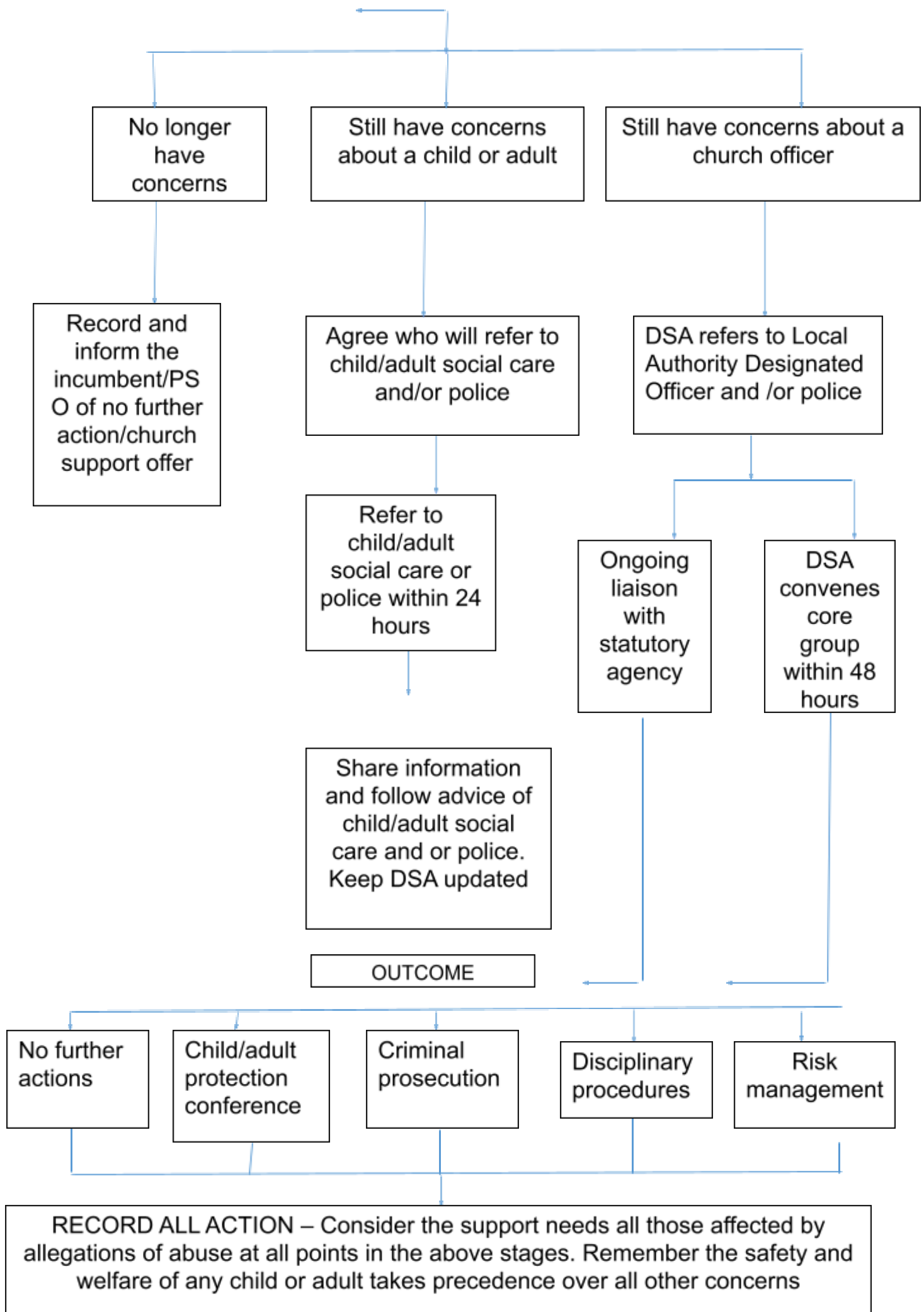
Safe guarding docs Safe guarding docs Winchester - Docu... (no subject) - rosie... Microsoft Word 20... Parish\_Safeguardin... ENG 1:42 PM

## APPENDIX J: FLOWCHART RESPONSE TO ALLEGATION

### Responding Promptly to Every Safeguarding Concern or Allegation







**APPENDIX K: PARISH RECORDING TEMPLATE**

**Initial Information as Reported**

<b>Subject</b> Alleged Victim <input type="checkbox"/> Alleged Abuser <input type="checkbox"/> <input type="text"/>	Name and Address		Tel/Mob/Email
<b>Subject</b> Alleged Victim <input type="checkbox"/> Alleged Abuser <input type="checkbox"/> <input type="text"/>	Name and Address		Tel/Mob/Email
<b>Contact Person (Referrer)</b>	<b>Position</b>	<b>Church/Agency</b>	<b>Tel/Mob/Email</b>
<input type="text"/>	<input type="text"/>	<input type="text"/>	<input type="text"/>
<input type="text"/> date(s) referred	<input type="text"/> date opened	<input type="text"/> date(s) closed	
Children <input type="checkbox"/>	Adults <input type="checkbox"/>	Allegation <input type="checkbox"/> (church official)	
Physical <input type="checkbox"/>	Domestic Abuse <input type="checkbox"/>	Financial <input type="checkbox"/>	
Psychological <input type="checkbox"/>	Disciplinary <input type="checkbox"/>	Organisational <input type="checkbox"/>	
Psychological/Emotional <input type="checkbox"/>	Sexual <input type="checkbox"/>	Sexual <input type="checkbox"/>	
Sexual abuse <input type="checkbox"/>	Sexual abuse non-current <input type="checkbox"/>	Sexual <input type="checkbox"/>	
Child Sexual Exploitation <input type="checkbox"/>	Online <input type="checkbox"/>	<input type="checkbox"/>	Modern Slavery <input type="checkbox"/>
<input type="text"/>			Groups <input type="text"/>
<input type="text"/>			<input type="text"/>
Notes			

**Signed**

A copy of this form should be retained confidentially in the parish by the **Parish Safeguarding Officer**. A copy should be e mailed to the **Diocesan Safeguarding Adviser**.

*Ongoing Record*

PSO: Rosemary Brooks Tel : 07593535570 E mail: <a href="mailto:rosemary.brooks@stjamesbythepark.org">rosemary.brooks@stjamesbythepark.org</a>	Incumbent: Dan Clark Tel 023808779665 E mail: <a href="mailto:dan@stjamesbythepark.org">dan@stjamesbythepark.org</a>
--	--

## **APPENDIX L: STATEMENT ON DOMESTIC ABUSE AND VIOLENCE**

### **Policy for Responding to Domestic Abuse**

**All forms of domestic abuse are wrong and must stop.**

**We are committed to promoting and supporting environments which:**

- ensure that all people feel welcomed, respected and safe from abuse
- protect those vulnerable to domestic abuse from actual or potential harm
- recognise equality amongst people and within relationships
- enable and encourage concerns to be raised and responded to openly and consistently.

**We recognise that:**

- all forms of domestic abuse cause damage to the survivor and express an imbalance of power in the relationship
- all survivors (regardless of age, disability, gender, racial heritage, religious belief, sexual orientation or identity) have the right to equal protection from all types of harm or abuse
- domestic abuse can occur in all communities
- domestic abuse may be a single incident, but is usually a systematic, repeated pattern which escalates in severity and frequency
- domestic abuse, if witnessed or overheard by a child, is a form of child abuse by the perpetrator of the abusive behaviour
- working in partnership with children, adults and other agencies is essential in promoting the welfare of any child or adult suffering abuse.

**We will endeavour to respond to domestic abuse by:**

**In all our activities –**

- valuing, listening to and respecting both survivors and perpetrators of domestic abuse

**In our publicity -**

- raising awareness about other agencies, support services, resources and expertise, through providing information in public and women only areas of relevance to survivors, children and perpetrators of domestic abuse

**When concerns are raised -**

- ensuring that those who have experienced abuse can find safety and informed help
- working with the appropriate statutory bodies during an investigation into domestic abuse, including when allegations are made against a member of the church community

**In our care -**

- ensuring that informed and appropriate pastoral care is offered to any child, young person or adult who has suffered abuse
- identifying and outlining the appropriate relationship of those with pastoral care responsibilities with both survivors and perpetrators of domestic abuse.